






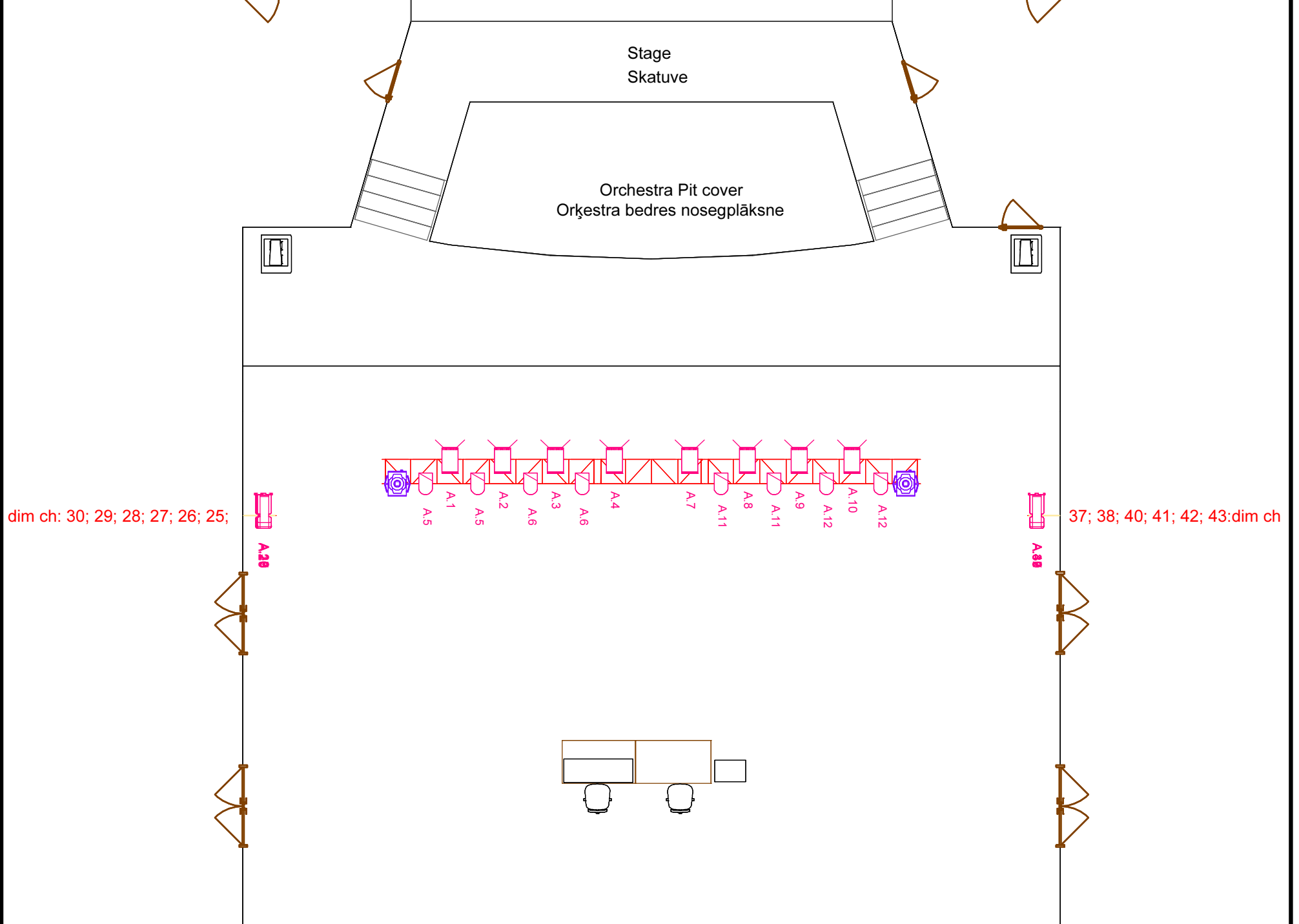
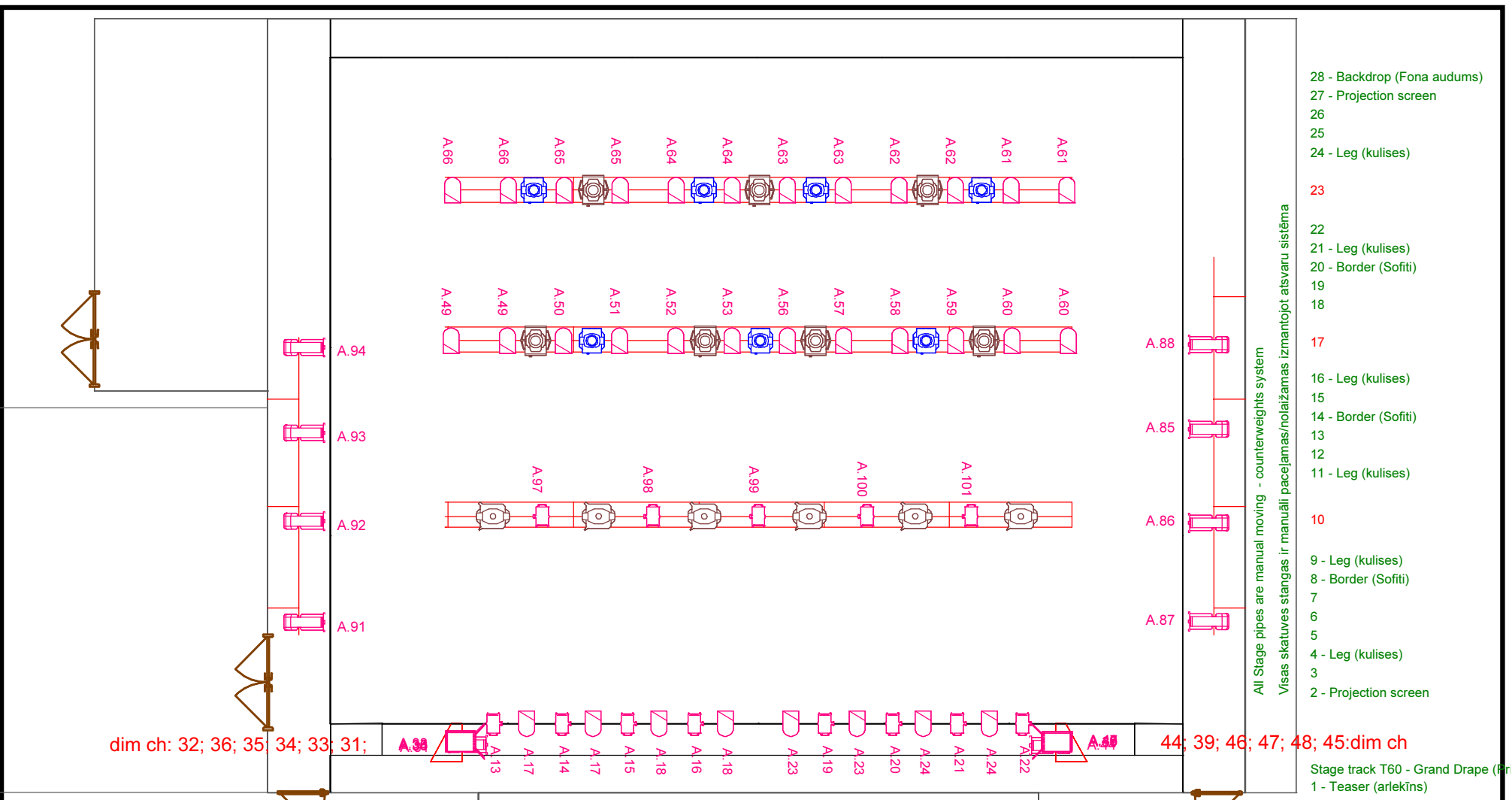


JELGAVAS PILSĒTAS PAŠVALDĪBAS IESTĀDE "KULTŪRA"

Adrese: Kr. Barona 6, Jelgava, LV – 3001
 E – pasts: kultura@kultura.jelgava.lv

- Lighting equipment**
-  - 7 x Clay Paky MYTHOS 2 (spot)
 -  - 7 x Clay Paky A.Leda B-eye K-10 (led wash)
 -  - 2 x Alpha Profile 800 ST (profile)
 -  - 6 x JB Lighting Varyscan P3 (250W HTI) m22ch
 -  - 16 x Robert Juliat PC 310HPS (1200W)
 -  - 18 x Philips Selecon Pacific 800W Zoom profile
 -  - 8 x Philips Selecon Pacific 1000W Zoom profile
 -  - 13 x PC 1200W
 -  - 40 x PAR 64 CP61
 -  - 1 x Follow Spot 1200W
 - - 1 x Swefog Haze (Ultimate 3000 DMX)
 - - 1 x AVOLITES PEARL 2000

- Stage Machinery**
- Scenery pipes**
 Diameter 50mm, length 12.0 m
 Manually controlled using counterweight system
- Lighting truss on stage**
 Diameter 50mm, length 10.0 m
 Manually controlled using counterweight system
- Lighting truss audience**
 Square truss (Slick - Novabeam) Diameter 50mm, length 10.0 m
 Controlled using 2 chain hoists (max load 400.0 kg)
- Curtain control**
 Variable speed and direction
 Control from the button station at performance managers place
 Control from DMX (Master control if connected to dmx)



JELGAVAS PILSĒTAS PAŠVALDĪBAS IESTĀDE "KULTŪRA"
 Adrese: Kr. Barona 6, Jelgava, LV – 3001
 E – pasts: kultura@kultura.jelgava.lv

- Lighting equipment**
- 7 x Clay Paky MYTHOS 2 (spot)
 - 7 x Clay Paky A.Leda B-eye K-10 (led wash)
 - 2 x Alpha Profile 800 ST (profile)
 - 6 x JB Lighting Varyscan P3 (250W HTI) m22ch
 - 16 x Robert Juliat PC 310HPS (1200W)
 - 18 x Philips Selecon Pacific 800W Zoom profile
 - 8 x Philips Selecon Pacific 1000W Zoom profile
 - 13 x PC 1200W
 - 40 x PAR 64 CP61
 - 1 x Folow Spot 1200W
 - 1 x Swefog Haze (Ultimate 3000 DMX)
 - 1 x AVOLITES PEARL 2000

- Stage Machinery**
- Scenery pipes**
- Diameter 50mm, length 12.0 m
 - Manually controlled using counterweight system
- Lighting truss on stage**
- Diameter 50mm, length 10.0 m
 - Manually controlled using counterweight system
- Lighting truss audience**
- Square truss (Slick - Novabeam) Diameter 50mm, length 10.0 m
 - Controlled using 2 chain hoists (max load 400.0 kg)
- Curtain control**
- Variable speed and direction
 - Control from the button station at performance managers place
 - Control from DMX (Master control if connected to dmx)